



SmartOne Solar™

Solar Powered Satellite Asset Tracking Device

POTENTIAL APPLICATIONS

- **Transportation:** Monitor & track assets and fleet movements even in remote locations.
- **Oil & Gas:** Aids in mobilizing & deploying high value assets in the field.
- **Construction:** Determine if, when & where your valuable equipment is being used.
- **Security:** Keep track of valuable mobile assets such as rail cars, propane tanks & AgTech.
- **Marine:** Monitor & track high value assets, such as boats, barges and containers, at the dock and off-shore.
- **Other industry uses:** Mining, forestry, government, fisheries, etc.
- **Emergency Management:** Monitor and track emergency provisions, light towers, generators, temporary office or housing units.

The SmartOne Solar is the next generation of Globalstar's industry-acclaimed SmartOne product line. While operating on one of the most modern and fastest satellite networks in the world and powered by the sun, this IoT device provides excellent remote monitoring and tracking capabilities. The SmartOne Solar's NiMH rechargeable batteries deliver up to 10 years of usable service, drastically reducing maintenance time and cost for labor and parts. It lets users intelligently configure reporting times and intervals for custom information delivery. The SmartOne Solar has unparalleled safety/device certifications including ATEX, IECEx, and North America, IP68/69K, HERO certifications, and others to meet the needs of every application.

- Maintenance-free device as the power of the sun recharges its batteries providing up to 10 years of usable service
- Delivers reliable location reporting for assets deployed worldwide – providing security and improved efficiency for your business
- Easy to install as simple packaging requires no harnesses, external power or external antennas
- Wide range of reporting capabilities, including:
 - GPS Location reporting in 4 modes
 - Stationary or In-Motion Reporting
 - Reduced Messaging & Theft Recovery Modes
 - Transmits data from external sensors
- User selectable Speed and Heading operation
- Two dry contact or wetted-voltage inputs available to manage engine run time, tank level or various alarm inputs

Value added cost benefit

- Comprehensive suite of safety certifications to open up a wider range of use cases
- Maintenance-free design
- Expanded environmental rating for use in harsh conditions

Specifications

PHYSICAL	
Dimensions	3.25 IN (H) X 7 IN (W) X 1.125 IN (D) 8.26 CM (H) X 17.78 CM (W) X 2.86 CM (D)
Weight	13.5 oz/385 g With optional metal mounting bracket 40.57 oz. (1150 g)
Operating Temperature	-40° to +85° C**
Input Voltage	10 TO 48 VDC
Battery Type	Built-in rechargeable NiMH batteries (non-replaceable)
CERTIFICATIONS	
	FCC, ISED, CE, AUS/NZ, ANATEL, NMETRO – LMP 19.0127 X PENDING: JQA(JAPAN), IFT, INDONESIA
INTRINSIC SAFETY*	
	ATEX/IEC Ex ia IIC T4 Ga, AEx ia IIC T4 Ga For international Zone 0 applications, HERO North America cETLus: <ul style="list-style-type: none"> Class I, Division 1, Groups A-D, T4 Class I, Zone 0, AEx ia IIC T4 Ga
STANDARDS	
	WEEE Compliant GMPCS-MoU IP68/69K (Protection) MIL-STD-810G for: <ul style="list-style-type: none"> Immersion Impact resistance Salt Fog Acidic Atmosphere Humidity Vibration
ACCESSORIES	
	Globalstar USB Configuration Cable* — Sold Separately (Part No. 6001249) Globalstar Universal Input Cable* — Sold Separately (Part No. 6001248) Stainless Steel Mounting Bracket — Sold Separately (Part No. 5304590) Bluetooth Dongle — Sold Separately (Part No. 6001250) Sierra Wireless Quick Mount Bracket — Sold Separately (Part No. 6001353)
STANDARD MESSAGING	
	Wake, GPS locate, transmit location, resume sleep settings 12 programmable sleep time-of-wake settings
ALTERNATIVE REPORTING	
	Supervisory reporting schedule triggered by alarm or motion Transmits GPS location on interval for programmed time or while alarm remains active
SERIAL COMMUNICATION CAPABILITY	
	User defined messages Serial (TTL) I/O capability to interface with remote passive and smart sensors and deliver user-defined messages Bluetooth interface for configuration/firmware updates
INTEGRATED ACCELEROMETER	
	Message on start and stop Engage interval override on motion for set time or while in motion
CHANGE OF LOCATION	
	Theft-alert reporting based on distance moved Reduced messaging mode
SATELLITE TECHNOLOGY	
	Global LEO Satellite operation using the Globalstar Simplex Data Network

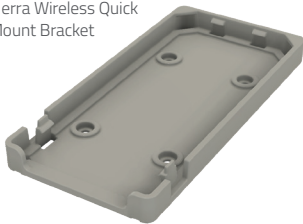
CONFIGURATION SOFTWARE

- Configuration software tool operates on a PC via serial cable
- Bluetooth interface also available for configuration and firmware updates

OPTIONAL ACCESSORY

A new, custom mounting bracket designed and offered exclusively by Sierra Wireless — is available for faster, more secure installation.

Sierra Wireless Quick Mount Bracket



*Device is not intrinsically safe when these cables are connected. Same for the USB.

**While functional in the specified Operating Temperature Range, usage of the SmartOne Solar above 60°C may cause RF signal degradation and decreased battery lifetime of the unit.

About Sierra Wireless

Sierra Wireless (NASDAQ: SWIR) (TSX: SW) is an IoT pioneer, empowering businesses and industries to transform and thrive in the connected economy. Customers Start with Sierra because we offer a device to cloud solution, comprised of embedded and networking solutions seamlessly integrated with our secure cloud and connectivity services. OEMs and enterprises worldwide rely on our expertise in delivering fully integrated solutions to reduce complexity, turn data into intelligence and get their connected products and services to market faster. Sierra Wireless has more than 1,300 employees globally and operates R&D centers in North America, Europe and Asia.

Connect with Sierra Wireless on the IoT Blog at www.sierrawireless.com/iot-blog, on Twitter at [@SierraWireless](https://twitter.com/SierraWireless), on LinkedIn at www.linkedin.com/company/sierra-wireless and on YouTube at www.youtube.com/SierraWireless

Sierra Wireless, the Sierra Wireless logo and the red wave design are trademarks of Sierra Wireless. Other registered trademarks that appear on this brochure are the property of the respective owners. © 2020 Sierra Wireless, Inc. 2020.03.11

